

"ഭരണഭാഷ - മാതൃഭാഷ"

നം.ഐസിഡിഎസ്/എ7-3187/16

സാമൂഹ്യ നീതി ഡയറക്ടറേറ്റ് (അനക്സ്),
സാമൂഹ്യക്ഷേമ ഭവൻ,പൂജപ്പുര,തിരുവനന്തപുരം.
ഫോൺ : 0471-2346508 ഫാക്സ് : 0471-2346534
ഇ-മെയിൽ swdicds@gmail.com
തീയതി : 31-3-17

സാമൂഹ്യനീതി ഡയറക്ടർ.

എല്ലാ ശിശു വികസന പദ്ധതി ഓഫീസർമാർക്കും.
എല്ലാ പ്രോഗ്രാം ഓഫീസർമാർക്കും.

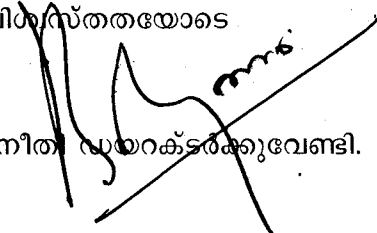
സർ,

വിഷയം : സാമൂഹ്യനീതി വകുപ്പ് - സംയോജിത ശിശു വികസന സേവന പദ്ധതി - 200 അങ്കണവാടി കെട്ടിട നിർമ്മാണം - പ്ലാൻ,എസ്റ്റിമേറ്റ് നൽകുന്നത് - സംബന്ധിച്ച്.

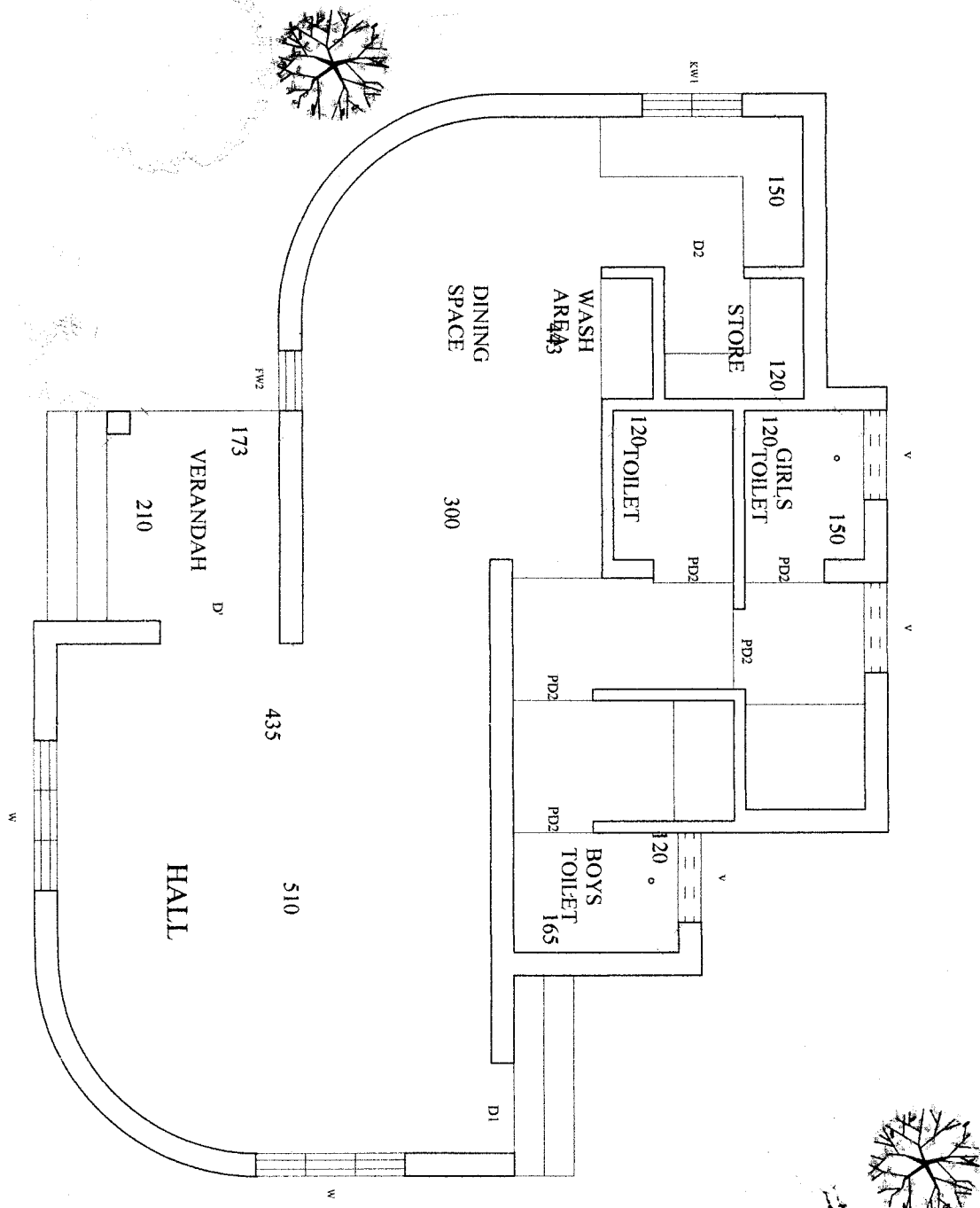
സൂചന : ICDS/A7-3187/16 dt: 17-3-17 നമ്പർ ഉത്തരവ്.

സൂചനയിലേയ്ക്ക് ശ്രദ്ധ ക്ഷണിക്കുന്നു. 2016-17 സാമ്പത്തിക വർഷം 4235-02-102-96(P) ശീർഷകത്തിൽ വകയിരത്തിയിട്ടുള്ള 1740 ലക്ഷം രൂപ (60%) ചെലവഴിച്ച് 14.5 ലക്ഷം രൂപ യൂണിറ്റ് കോസിറ്റിൽ 200 അങ്കണവാടി കെട്ടിടങ്ങൾ നിർമ്മിക്കുന്നതിന് സൂചന പ്രകാരം അനുമതി നൽകിയിരുന്നു.സൂചന ഉത്തരവിൽ അനുബന്ധം (2),(3) ആയി നൽകിയിരുന്ന പ്രസ്തുത പ്രവൃത്തിയുടെ പ്ലാൻ, എസ്റ്റിമേറ്റ് എന്നിവ ഉൾപ്പെടുത്തിയിരുന്നില്ല.

സംസ്ഥാനത്ത് 14.5 ലക്ഷം രൂപ നിരക്കിൽ 200 കെട്ടിടങ്ങൾ നിർമ്മിക്കുന്നതിന് Habitat ഏകീകൃത പ്ലാൻ ,എസ്റ്റിമേറ്റ് എന്നിവ തയ്യാറാക്കി ലഭ്യമാക്കിയിട്ടുണ്ട്. പ്രസ്തുത പ്ലാൻ,എസ്റ്റിമേറ്റ് എന്നിവ ഇതോടൊപ്പം ഉള്ളടക്കം ചെയ്യുന്നു. പ്ലാൻ, എസ്റ്റിമേറ്റ് എന്നിവ ബന്ധപ്പെട്ട PWD എക്സിക്യൂട്ടീവ് എൻജിനീയർമാർക്ക് നൽകേണ്ടതാണ്. സ്ഥലത്തിന്റെ അവസ്ഥയനുസരിച്ച് പ്ലാൻ ഏറ്റെടുക്കുക, എസ്റ്റിമേറ്റ് തുകഎന്നിവയിൽ മാറ്റം വരുത്താതെ കെട്ടിടത്തിന്റെ പ്ലാനിൽ മാറ്റം വരുത്തുവാൻ സൂചന ഉത്തരവിലൂടെ PWD പൊതുമരാമത്ത് വകുപ്പ് ചീഫ് എൻജിനീയർക്ക് അനുമതി നൽകിയിട്ടുണ്ട്.

വിശ്വസ്തതയോടെ


സാമൂഹ്യനീതി ഡയറക്ടർക്കുവേണ്ടി.



Handwritten signature

TECHNOLOGY GROUP POOJAPPURA THIRUVANANTHAPURAM-12	PRELIMINARY SKETCH	TITLE	ANGANWADY SOCIAL JUSTICE DEPARTMENT	
		DRG. NAME	LAYOUT PLAN	
			G.F	745 SQ.FT
			F.F	



ROUGH COST ESTIMATE OF BUILDING FOR ANGANWADY-SOCIAL JUSTICE DEPARTMENT

Sl no	Particulars	Quantity	Unit rate based on the DsoR - 2014 without OH	Approved Cost Index of 1,4667 for Trivandrum District	Total Unit Rate	Amount
	ANGANWADY-1					
1	Earth work in excavation by mechanical means (Hydraulic excavator) /manual means in foundation trenches or drains (not exceeding 1.5 m in width or 10 sqm on plan), including dressing of sides and ramming of bottoms, lift upto 1.5 m, including getting out the excavated soil and disposal of surplus excavated soil as directed, within a lead of 50 m. All kinds of soil.	25.00	150.65	1.4667	220.96	5,523.96
2	Dry rubble masonry with hard stone in foundation including cost of through stone and bond stone including cost of all materials, labour etc. (Modified item)	25.00	2579.88	1.4667	3783.91	94,597.75
3	R.R.Masonry in CM 1:8 for basement including all cost and labour charges etc	10.00	3747.748	1.4667	5496.82	54,968.22
4	R.C.C 1:1.5:3 using 20mm metal for R.C.C works including all form work watering, curing, cost and conveyance of all materials and labour charges etc complete excluding cost of steel	1.35	5959.32	1.4667	8740.53	11,799.72
5	Centering and shuttering including strutting, propping etc. and removal of form for Foundations, footings, bases of columns, etc. for mass concrete					
	RCC Belt	15.00	187.9087	1.4667	275.61	4,134.09

6	Supplying and fabrication of reinforcement grills using Fe 415 steel for Lintel, Beam and Roof Slab including all cost and conveyance of all materials hire and labour charges etc complete.	165.00	kg	65.13	1.4667	95.53	15,761.82
7	Filling available excavated earth (excluding rock) in trenches, plinth, sides of foundations etc. in layers not exceeding 20cm in depth, consolidating each deposited layer by ramming and watering, lead up to 50 m and lift upto 1.5 m.	21.00	m3	107.513	1.4667	157.69	3,311.48
	Sub Structure Total ---- (A)						190,097.03
8	Block masonry using interlock mud blocks for superstructure including centering, scaffolding materials and labour charges etc complete (Market Rate)	158.00	m2			1000.0000	158,000.00
9	Brickmasonry in CM 1:6 using country burnt bricks of size 22.9X11.2X7 cms for wall of thickness 23 cms including cost and conveyance of all materials hire and labour charges etc complete	0.85	m3	5190.23	1.4667	7612.51	6,470.63
10	Providing wood work in frames of doors etc fixed in position Pincode (Based on the Observed Data of DSOR)	0.12	m3	107455.10	1.4667	157604.40	18,912.53
11	Supply and fixing moulded skinned interior door of any approved make and of 35mm thick to suit door frames already fixed at site with stile and nail kiln hardened, chemically treated jointed hard wood core with expanded cellular core skin with 4 nos 100mm oxidised iron butt hinges, 2nos 150mm iron tower bolt, 1 no door bush, 1no anodised aluminium 16mm diax200mm aldorp 1 no 150mm door handles etc (Market Rate)	6.30	m2			2894.1000	18,232.83

12	Supplying and fixing of fully glazed steel windows with 5 mm thick plain/pin headed glass panes and grills made up of 10mm Square rods inclusive of all labour charges for fixing including all cost and conveyance of all materials etc complete (Market Rate)	8.10	m2				3750.0000	30,375.00
13	Supplying and fixing of door outer frames and single panel door shutters fully made up of PVC material of any approved make including cost and conveyance of all materials, necessary hardwares, handles etc hire and labour charges etc. complete. (Market Rate)	8.40	m2				1800.0000	15,120.00
14	RCC work in for filler slab using Mangalore Pattern tiles as filler materials up to floor five level excluding cost of centering, shuttering, finishing and reinforcement : - 1:1.5:3 -coarse sand - stone aggregate 20 mm) and cost & labour charges for the steel fabrication work (Modified Item)	8.55	m3	6315.913	1.4667		9263.55	79,203.35
15	R.C.C 1:1.5:3 using 20mm metal for R.C.C works excluding all form work, shuttering and deshuttering, watering, curing, cost and conveyance of all materials hire and labour charges etc complete also excluding cost and labour charges of steel fabrication work	2.10	m3	6766.722	1.4667		9924.75	20,841.98
16	Centering and shuttering including strutting, propping etc. and removal of form for							
	Lintel and Beams	15.00	m2	317.70	1.4667		465.97	6,989.56
	Slab	95.00	m2	384.18	1.4667		563.48	53,530.30
17	Supplying and fabrication of reinforcement grills using Fe 415 steel for Lintel, Beam and Roof Slab including all cost and conveyance of all materials hire and labour charges etc complete.	726.00	kg	65.13	1.4667		95.53	69,352.00

18	Plastering the internal walls with CM 1:4, 12mm thick floated hard and trowelled smooth and watering, curing and scaffolding charges including cost and conveyance of all materials and hire labour charges etc complete	215.00	m2	156.24	1.4667	229.16	49,268.80
19	Plastering with cm 1:4, 12mm thick floated hard and trowelled smooth for outside walls including watering ,curing ,cost and conveyance of all materials and labour charges etc complete	45.00	m2	156.24	1.4667	229.16	10,312.07
20	Plastering the roof top with 12 mm thick cement plaster 1:3 (1 cement: 3 coarse sand) finished with a flushing coat with neat cement and water proofing admixture.	85.06	m2	207.70	1.4667	304.63	25,913.35
21	Wall pointing in between the brick joints of the external wall surface with CM 1:3 after washing the surface thoroughly including cost and conveyance of all materials and hire and labour charges etc complete	95.00	m2	101.72	1.4667	149.19	14,173.31
22	Providing bordering / watercutting to bottom of sunshades and roof projection including all cost and labour charges etc complete (Market Rate)	26.00	m			55.0000	1,430.00
23	Flooring with PCC 1: 4:8 using 40 mm coarse aggregate to a minimum thickness of 100 mm after compacting the surface well and including watering curing cost and conveyance of all materials hire and labour charges etc complete	6.00	m3	4114.14	1.4667	6034.21	36,205.25
24	White washing ceiling and inside wall with two coats of white distemper over a coat of white cement including all cost and labour charges etc complete	72.00	m2	48.44	1.4667	71.05	5,115.38
25	Colour washing to the inner side of the wall using distemper two coats over a coat of white cement including all cost and labour charges etc complete	177.00	m2	65.61	1.4667	96.23	17,032.74

26	Painting the outer plastered wall with two coats of anti fungal acrylic water proof exterior paint of approved colour and shade over the coat of cement water proof paint after cleaning the surface including all cost and labour charges etc complete (Market Rate)	140.00	m2				150.0000	21,000.00.
27	Painting doors and windows with two coats of synthetical enamel paint over a coat of appropriate primer including all cost and labour charges etc complete	31.00	m2	71.16	1.4667		104.37	3,235.48
28	Supplying and laying ceramic tiles of size 30x30cm laid in 15mm thick c.m. 1:3 to correct line and level, cutting neatly and pointing with matching coloured cement for floor including cost and conveyance of all materials and labour charges etc complete	71.00	m2	865.12	1.4667		1268.87	90,089.88
29	Providing and fixing best quality ceramic glazed wall tiles conforming to IS:15622 (thickness to be specified by the manufacturer), of approved make, in all colours, shades except burgundy, bottle green, black of any size as approved by Engineer-in-Charge, in skirting, risers of steps and dados, over 12 mm thick bed of cement mortar 1:3 (1 cement : 3 coarse sand)	38.00	m2	800.27	1.4667		1173.76	44,602.73
30	Providing Cartoon Paintings in walls			L.S				25,000.00
	Super Structure Total ----- (B)							820,407.17
31	Water supply and Sanitary arrangements including cost of all Final Fittings, PVC Overhead Water Tank, Readymade Pre-cast concrete Septic Tank and cost and conveyance of all materials required hire and labour charges etc complete			L.S				120,000.00

32	Internal Electrification including cost and conveyance of all materials hire and labour charges etc. complete for the conduits, wires, switches and Distribution Boxes and its accessories with a minimum of Two light points and a fan point in a room also a 5 Amps plug point in all switch boards but excluding cost of final fittings.	L.S					75,000.00
	Total of Water supply, Sanitary and Electrification works ----- (C)						195,000.00
	Sub Total (A) + (B) + (C)						1,205,504.20
	Applicable Taxes and Fees						
	KCWWF (1%) on the Sub Total amount						12,055.04
	KVAT (4%) on the Sub Total amount						48,220.17
	Consultancy Charges (8%) on the Sub Total amount						96,440.34
	Service tax on Consultancy Charges (15%)						14,466.05
	Works contract Service Tax @ 15% on the 40% of the Sub Total amount						72,330.25
	SAY						1,449,016.05
							1,450,000.00
	RUPEES FOURTEEN LAKH FIFTY THOUSAND ONLY						
	Note:						
1	Substructure amount may vary according to site conditions and it is absolutely depends on the type of foundation.						
2	Rates are based on DSR 2014 with the approved cost index of 1.4667 for Trivandrum District.						
3	Kindly make a note that we have not added any provision for the Site Development, Compound Wall etc. in our estimate.						

Devi...